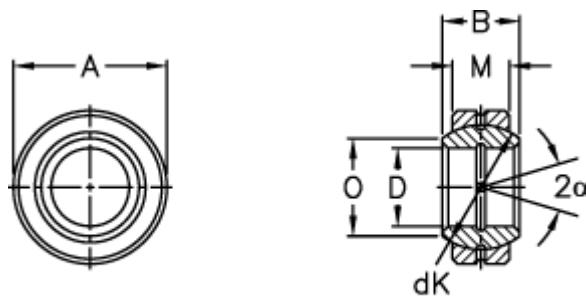


Article number: 03500060

Description: Fluro Rod end GE 60E

Measures



Str. 6-12 uden smørerille

A	= 90 0 -0,015	Tilt angle = 6
B	= 44	Weight = 1000
D	= 60 0 -0,015	
dK	= 80	
Dynamic load C (kN)	= 245	
M	= 36	
O	= 66.8	
Static load C0 (kN)	= 1220	